



# Presentation to Association of Seafood Producers

St. John's, NL – December 5, 2019

# Presentation Outline

C-NLOPB Overview

Key Actions from Recent Spills

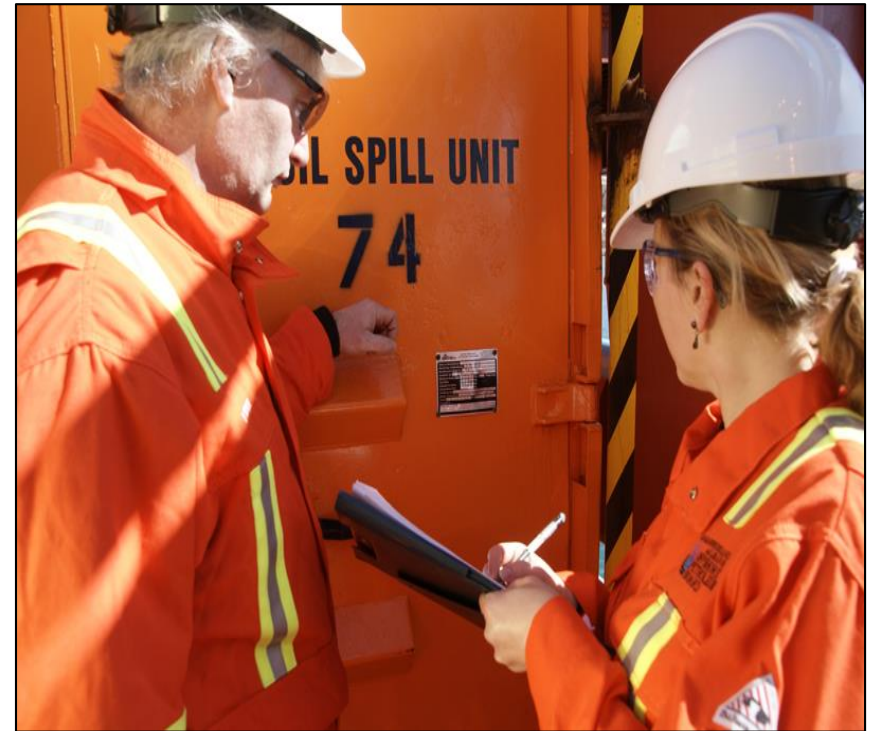
Collaboration with DFO

Regional Assessment

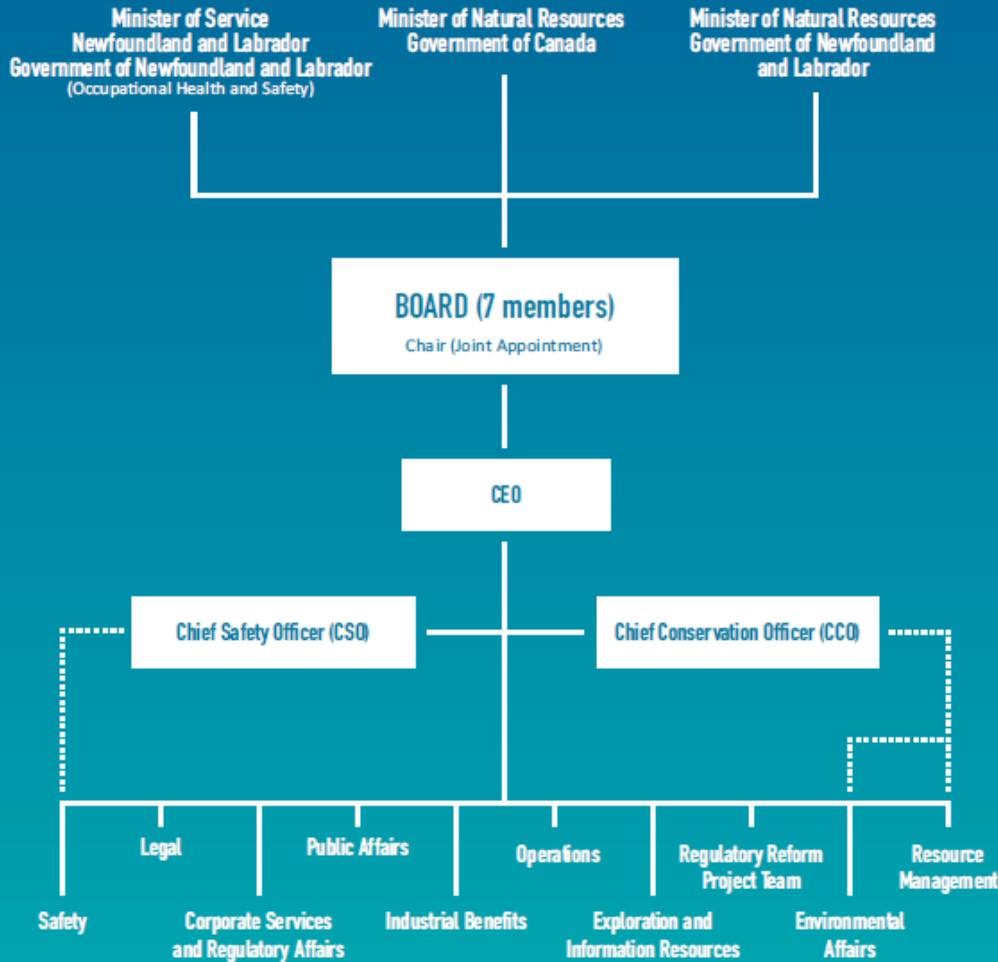
Exploration Licences and Future  
Land Sales

# C-NLOPB Role and Mandate

- For +30 years, served as effective agent of independent, joint management of Canada-NL Offshore Area
- Role: facilitate petroleum resource exploration and development
- Mandate: Apply provisions of the *Atlantic Accord* and *Implementation Acts* to all activities of operators



# Staff, Governance Structure and Budget

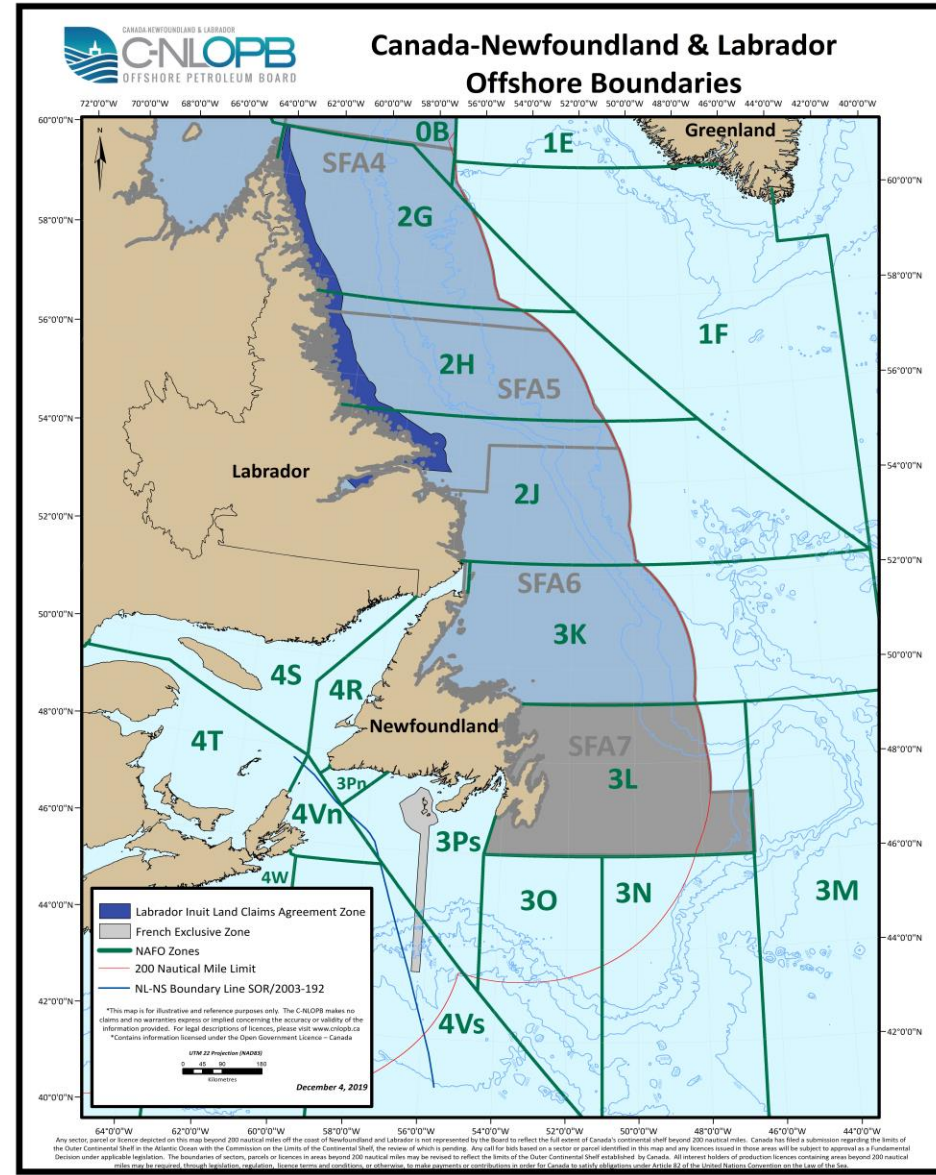


- 95 Full-time staff
- 2019-20 budget: \$22.3 Million
  - Fully cost-recovered from industry



# Canada-NL Offshore Area

- Jurisdiction extends to farther of 200NM or outer edge of Continental Shelf
- Areal extent exceeds 1.8 million km<sup>2</sup>
- Over 20 offshore sedimentary basins
- Proven petroleum systems in several basins



# By the Numbers

- 478 wells spud since 1966, including 172 exploration wells
- ~1.9 billion barrels produced from 4 projects
- Equivalent of 6.6 million line km of seismic data acquired
- \$3.3 billion industry expenditure in 2018; \$62.7 billion since 1966

Hibernia



Terra Nova



White Rose



Hebron



# Actions Arising from Recent Spills

- C-NLOPB hosted productive 2-day Spill Prevention and Response Workshop
- Requirement for industry Performance Improvement Plan
- Updated Adverse Weather Protocols
- More performance-based regulation, to enable more industry innovation
- Strengthen risk-based approach to audits and inspections



# Actions Arising from Recent Spills

- New hires in risk assessment, environment and safety
- Refining roles of Chief Safety Officer and Chief Conservation Officer
- Use of new digital technology
- Collaboration with international regulators
  - Canada as IRF Chair
  - IOPER
- Formal investigations ongoing



# Collaboration with DFO

- Regular and frequent engagement
- C-NLOPB fully supports federal approach to marine conservation
- Follow policy consistent with federal response to Panel on Marine Protected Area Standards
- Oil and gas activity prohibited in Marine Protected Areas
- Activity permitted in marine refuges and similar areas, if risks to conservation objectives mitigated
- Proposed oil and gas activities remain subject to assessment

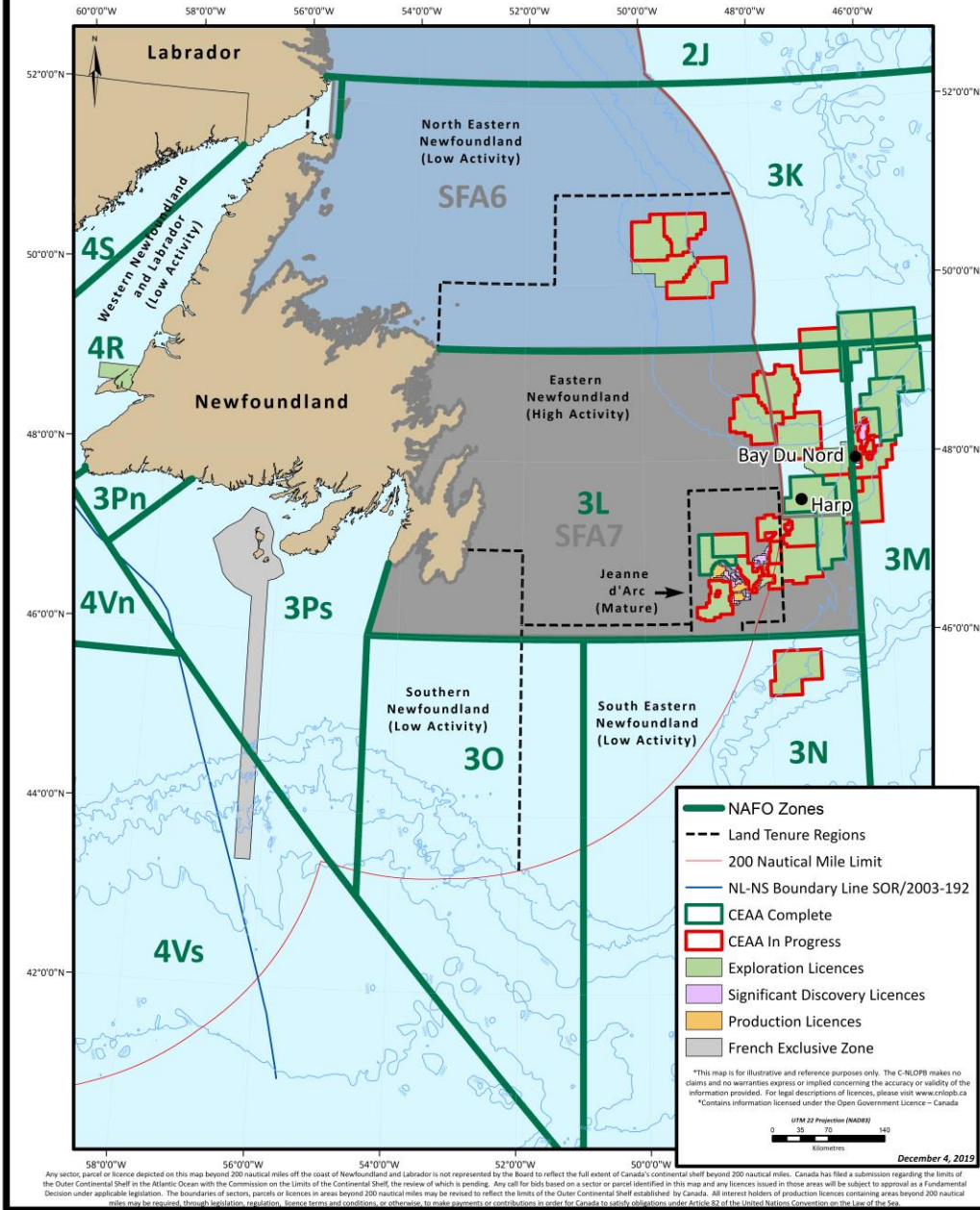


# Regulating Seismic Activity

- Comprehensive EA and activity review process before seismic activities are authorized
  - Consultations with Government subject matter experts and fishing industry
- C-NLOPB relies on DFO advice regarding seismic effects
- Operators adhere to:
  - *Statement of Canadian Practice with respect to the Mitigation of Seismic Sound in the Marine Environment*
  - *One Ocean Protocol for Seismic Survey Programs in Newfoundland and Labrador*
- ESRF-funded research by Dr. Corey Morris on potential seismic impacts on
  - Crab (report due later this month)
  - Groundfish (research commenced in 2018)

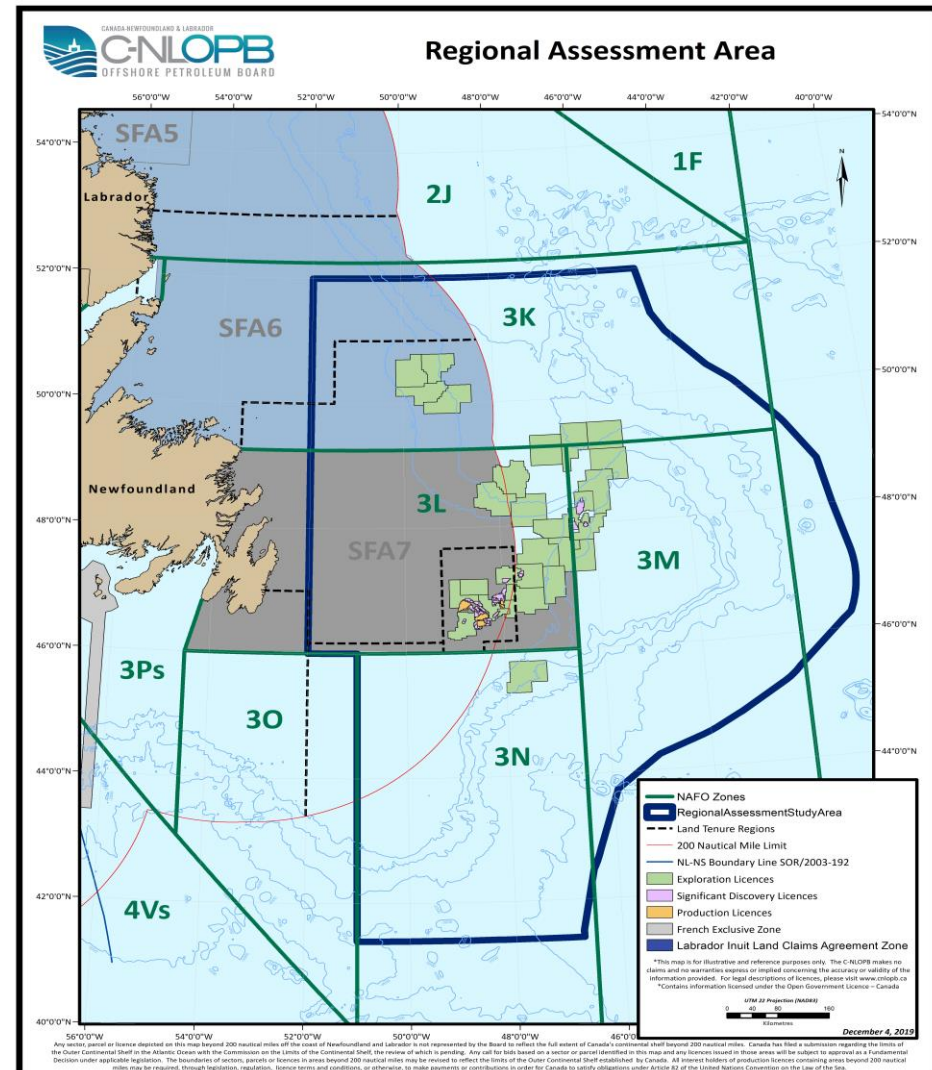


# Canada-Newfoundland & Labrador Offshore CEA Information

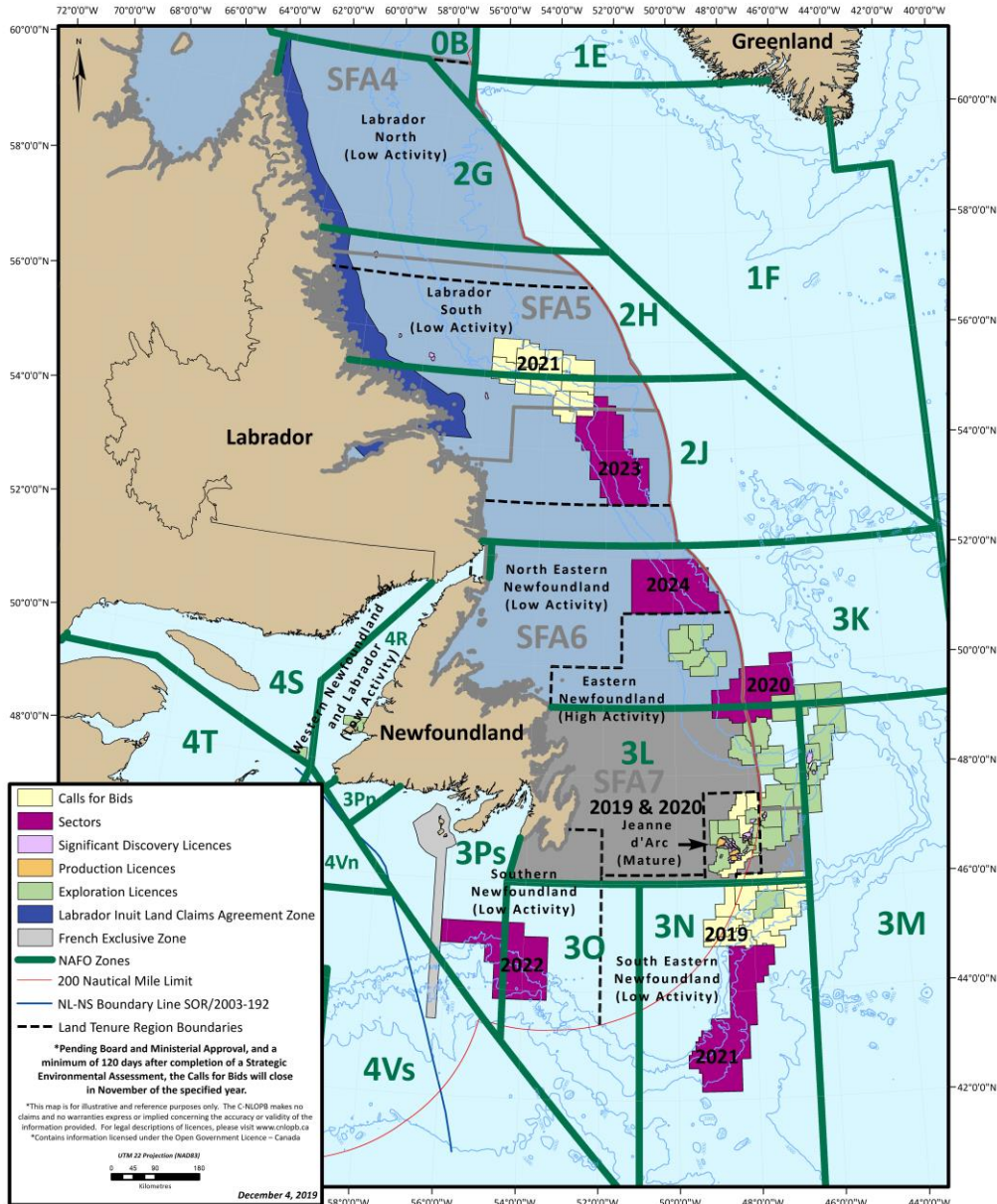


# Regional Assessment of Exploratory Drilling

- Objective is to improve efficiency of EA process
- Joint initiative of federal and NL Governments, and C-NLOPB (co-chair)
- Committee consulting on draft Recommendations with stakeholders this week
  - Consultations on full report in January 2020



# Projected Calls for Bids Closing Dates\*



\*Pending Board and Ministerial Approval, and a minimum of 120 days after completion of a Strategic Environmental Assessment, the Calls for Bids will close in November of the specified year.

\*This map is for illustrative and reference purposes only. The C-NLOPB makes no claims and no warranties express or implied concerning the accuracy or validity of the information provided. For legal descriptions of licences, please visit [www.cnlopb.ca](http://www.cnlopb.ca)

\*Contains information licensed under the Open Government Licence - Canada

Any sector, parcel or licence depicted on this map beyond 200 nautical miles off the coast of Newfoundland and Labrador is not represented by the Board to reflect the full extent of Canada's continental shelf beyond 200 nautical miles. Canada has filed a submission regarding the limits of the Outer Continental Shelf in the Atlantic Ocean with the Commission on the Limits of the Continental Shelf, the review of which is pending. Any call for bids based on a sector or parcel identified in this map and any licences issued in those areas will be subject to approval as a Fundamental Decision under applicable legislation. The boundaries of sectors, parcels or licences in areas beyond 200 nautical miles may be revised to reflect the limits of the Outer Continental Shelf established by Canada. All interest holders of production licences containing areas beyond 200 nautical miles may be required, through legislation, regulation, licence terms and conditions, or otherwise, to make payments or contributions in order for Canada to satisfy obligations under Article 82 of the United Nations Convention on the Law of the Sea.



CANADA-NEWFOUNDLAND & LABRADOR

**C-NLOPB**

OFFSHORE PETROLEUM BOARD

Thank You

Website: [cnlopb.ca](http://cnlopb.ca)

Twitter: [@CNLOPB](https://twitter.com/CNLOPB)

You Tube: C-NLOPB Channel

E-mail: [information@cnlopb.ca](mailto:information@cnlopb.ca)